

Hammers and Wrecking Bars

1665 Engineers Hammer



Type	black lacquered, polished faces, peen and face ground, ash shaft
Standard	according to DIN 1041, German type, shaft according to DIN 5111

Stock-No.	g	mm	g	
	g	mm		
1665- 100	100	260	2	145
1665- 200	200	275	2	250
1665- 300	300	300	2	370
1665- 400	400	310	2	460
1665- 500	500	320	2	590
1665- 600	600	325	2	730
1665- 800	800	350	2	910
1665-1000	1000	355	2	1170
1665-1500	1500	380	2	1700
1665-2000	2000	400	2	2285

1665-K Engineers Hammer



Type	with 3 component heavy duty safety handle, fixed mechanical, no backstroke or vibration
------	---

Stock-No.	g	mm	g	
	g	mm		
1665-K300	300	304	2	467
1665-K500	500	325	2	751
1665-K1000	1000	363	2	1372

1672 Club Hammer



Type	drop forged
Standard	according to DIN 6475, shaft according to DIN 5135

Stock-No.	kg	mm	g	
	kg	mm		
1672- 1000	1	260	2	1180
1672- 1250	1,25	260	2	1430
1672- 1500	1,5	280	2	1690
1672- 2000	2	300	2	2200

1665ST Handles for Stock-No. 1665



Type	ash tree
Standard	acc. DIN 5135

Stock-No.	g	mm	g	
	g	mm		
1665ST- 100	100	260	6	50
1665ST- 200	200	275	6	57
1665ST- 300	300	300	6	71
1665ST- 400	400	310	6	100
1665ST- 500	500	320	6	105
1665ST- 600	600	325	6	127
1665ST- 800	800	350	2	149
1665ST-1000	1000	355	2	157
1665ST-1500	1500	380	2	185
1665ST-2000	2000	400	2	285

1670 Engineers Ball Pein Hammer



Type	English type, black lacquered, ball pein and face ground, ash shaft
------	---

Stock-No.	Ball pein lb.	mm	g	
	Ball pein lb.	mm		
1670- 1/2	1/2	295	2	310
1670- 3/4	3/4	315	2	465
1670- 1	1	335	2	555
1670- 1.1/2	1.1/2	365	2	825
1670- 2	2	375	2	1025

1672ST Handles for Stock-No. 1672



Type	ash tree
Standard	acc. DIN 5135

Stock-No.	g	mm	g	
	g	mm		
1672ST-1000	1000	260	6	82
1672ST-1250	1250	260	6	86
1672ST-1500	1500	280	6	115
1672ST-2000	2000	300	6	134

1665KL Wedges for Stock-No. 1665



Type	steel-grey
------	------------

Stock-No.	g	mm	g	
	g	mm		
1665KL- 100	100	7	6	1
1665KL- 200	200	8	6	2
1665KL- 300	300	9	6	2
1665KL- 400	400	10	6	3
1665KL- 500	500	12	6	4
1665KL- 600	600	13	6	6
1665KL- 800	800	14	6	7
1665KL-1000	1000	15	6	8
1665KL-1500	1500	15	6	8
1665KL-2000	2000	16	6	11

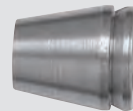
1670ST Handles for Stock-No. 1670



Type	ash tree
Standard	acc. DIN 5135

Stock-No.	Ball pein lb.	mm	g	
	Ball pein lb.	mm		
1670ST-1/2	1/2	295	6	81
1670ST-3/4	3/4	315	6	98
1670ST-1	1	335	6	105
1670ST-1.1/2	1.1/2	365	2	132
1670ST-2	2	375	2	150

1672KL Wedges for Stock-No. 1672



Type	steel-grey
------	------------

Stock-No.	g	mm	g	
	g	mm		
1672KL-1000	1000	14	6	7
1672KL-1250	1250	15	6	8
1672KL-1500	1500	15	6	8
1672KL-2000	2000	16	6	11

1670KL Wedges for Stock-No. 1670



Type	steel-grey
------	------------

Stock-No.	Ball pein lb.	mm	g	
	Ball pein lb.	mm		
1670KL-1/2	1/2	8	6	2
1670KL-3/4	3/4	10	6	3
1670KL-1	1	12	6	6
1670KL-1.1/2	1.1/2	13	6	7
1670KL-2	2	15	6	8

1672-K Club Hammer



Type	with 3 component heavy duty safety handle, fixed mechanical, no backstroke or vibration
------	---

Stock-No.	g	mm	g	
	g	mm		
1672-K800	800	260	2	1031
1672-K1000	1000	260	2	1215
1672-K1250	1250	260	2	1416
1672-K1500	1500	282	2	1816