

## 7907 Impact Adaptor

1/4"



Stock-No.	⌀	mm	Ring	Locking Pin	📦	⚖️ g
7907-5/16	1/4"	5/16"	25	7884-11 7883-11	3	18
7907-3/8	1/4"	3/8"	25	7884-11 7883-11	3	20

Rings and pins are not included in prices of socket parts.

## Impact Sockets and Screwdriver Sockets 3/8"

acc. to DIN 3129 / ISO 2725, for use with air or electric power tools

Square drive according to DIN 3121 / ISO 1174

Material: Super Chrome-Vanadium, black finish

## 789 Impact Socket

3/8"



Application	for outside hexagon bolts					
Type	hexagon					
Stock-No.	⌀ <sub>mm</sub>	mm	Ring	Locking Pin	📦	⚖️ g
789- 6	32	32	7894-15	7893-15	6	40
789- 7	32	32	7894-15	7893-15	6	40
789- 8	32	32	7894-15	7893-15	6	40
789- 9	32	32	7894-15	7893-15	6	40
789-10	32	32	7894-15	7893-15	6	41
789-11	32	32	7894-15	7893-15	6	41
789-12	32	32	7894-15	7893-18	6	58
789-13	32	32	7894-15	7893-18	6	58
789-14	32	32	7894-15	7893-18	6	58
789-15	32	32	7894-18	7893-18	6	58
789-16	32	32	7894-18	7893-18	6	58
789-17	32	32	7894-18	7893-18	6	66
789-18	32	32	7894-18	7893-18	6	66
789-19	32	32	7894-18	7893-18	6	66
789-20	34	34	7894-18	7893-18	6	75
789-21	34	34	7894-18	7893-18	6	75
789-22	34	34	7894-18	7893-18	6	75

Stock-No.	⌀ <sub>mm</sub>	mm	Ring	Locking Pin	📦	⚖️ g
789A-5/16	32	32	7894-15	7893-15	6	40
789A-3/8	32	32	7894-15	7893-15	6	41
789A-7/16	32	32	7894-15	7893-15	6	41
789A-1/2	32	32	7894-15	7893-18	6	55
789A-9/16	32	32	7894-18	7893-18	6	56
789A-5/8	32	32	7894-18	7893-18	6	58
789A-11/16	32	32	7894-18	7893-18	6	66
789A-3/4	32	32	7894-18	7893-18	6	66
789A-13/16	34	34	7894-18	7893-18	6	75
789A-7/8	34	34	7894-18	7893-18	6	75

Rings and pins are not included in prices of sockets.

## 789KLS Impact Socket Set

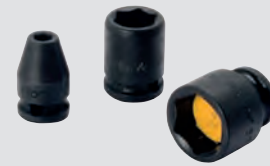
3/8"



Application	for fitting in tool trolleys or on tool panels		
Type	with 14 socket clips		
Stock-No.	Contents	mm	⚖️ g
789KLS-14M	789M-6; 7; 8; 9; 10; 11; 12; 13; 14; 15; 16; 17; 18; 19mm	414	1 790
870KL	socket rail only	414	12 72

## 789MG Impact Socket, with Magnetic Insert

3/8"



Application	for outside hexagon bolts					
Type	hexagon, with magnetic insert					
Stock-No.	⌀ <sub>mm</sub>	mm	Ring	Locking Pin	📦	⚖️ g
789MG- 6	30	30	7894-15	7893-15	6	42
789MG- 7	30	30	7894-15	7893-15	6	42
789MG- 8	30	30	7894-15	7893-15	6	42
789MG- 9	30	30	7894-15	7893-15	6	42
789MG-10	30	30	7894-15	7893-15	6	42
789MG-11	30	30	7894-15	7893-15	6	42
789MG-12	30	30	7894-15	7893-18	6	42
789MG-13	30	30	7894-15	7893-18	6	62
789MG-14	30	30	7894-15	7893-18	6	62
789MG-15	30	30	7894-18	7893-18	6	62
789MG-16	30	30	7894-18	7893-18	6	62
789MG-17	30	30	7894-18	7893-18	6	62
789MG-18	30	30	7894-18	7893-18	6	62
789MG-19	30	30	7894-18	7893-18	6	72

Rings and pins are not included in prices of sockets.

## 789LTMG Extra Deep Impact Socket, with Magnetic Insert

3/8"



Application	for outside hexagon bolts, especially suitable for wheel bolts					
Type	hexagon, extra deep with magnetic insert					
Stock-No.	⌀ <sub>mm</sub>	mm	Ring	Locking Pin	📦	⚖️ g
789LTMG-13	65	65	7894-15	7893-18	6	122
789LTMG-15	65	65	7894-18	7893-18	6	122
789LTMG-17	65	65	7894-18	7893-18	6	132
789LTMG-19	65	65	7894-18	7893-18	6	152
789LTMG-22	65	65	7894-18	7893-18	6	202

Rings and pins are not included in prices of sockets.